



TDSB Ward 13 Forum

Return to School September 2021

Meeting Date: Aug 11, 2021

TRUSTEE James Li

Agenda

1. Health and Safety
 2. Facilities
 3. Vaccination
 4. Learning in Elementary Schools
 5. Learning in Secondary Schools
 6. Special Education/Specialized Programs/French Education
 7. COVID-19 Case & Outbreak Management
-

Health and Safety



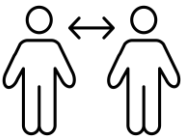
Screening for COVID-19 Symptoms Daily

- Requiring all students and staff to conduct a daily self-assessment and stay home if they have symptoms or other COVID-19 exposure risk factors.
- Following guidance from Toronto Public Health in the event of symptoms or other COVID-19 risk factors.



Wearing Masks

- Staff are required to wear a medical mask, as well as face shields and other PPE as appropriate.
- All students, Junior Kindergarten to Grade 12, are required to wear a mask at school.



Practicing Physical Distancing

- Encouraging and maintaining physical distancing measures as much as possible.
- Marking floors with stickers to designate traffic flow and distancing.



Practicing Proper Hygiene

- Posting visible signage about hand washing and proper respiratory etiquette.
- Building in hand washing time into daily routines, including after washroom use, recess and lunch breaks.
- Providing alcohol-based sanitizers throughout the school and at designated entry and exit points.
- Using water fountains only to refill water bottles.

Facilities



Enhancing Cleaning and Other Measures

- Caretaking staff will perform routine cleaning of general facilities through the day and enhanced cleaning of high touch surfaces such as light switches, handrails, door handles, etc.
- Identifying capacity limits in washrooms and on elevators.



Improving Ventilation

	Mechanical Ventilation	Open Windows	Mixed
Ward 13	79% (22 schools)	0% (0 schools)	21% (6 schools)
TDSB Wide	~53%	~9%	~38%

- Installing institutional-grade HEPA filters in every occupied classroom.
- Increasing ventilation in schools and classrooms with mechanical systems by adjusting the air exchanges and running them two hours before class and two hours after class.
- Increasing natural ventilation by opening windows for short periods of time.
- Investing \$165 million (Provincial and Federal funding) to
 - Upgrade air handling system in 66 schools
 - Automating building ventilation system in 103 schools
 - Installing new ventilation systems in 21 portables



Austin Air Systems
Institutional HEPA Filter
<https://www.austinair.ca/pages/for-schools>

Vaccination



Vaccinations

- The most important step we can take to ensure the health and safety of all community members is to get vaccinated against COVID-19. Children age 12 and up are eligible to receive a first and second dose of the Pfizer vaccine in Ontario.
- 5 Vaccination Clinics in TDSB schools from Aug 12 to 14. <https://www.tdsb.on.ca/School-Year-2021-22/Health-and-Safety/COVID-19-Vaccines>
- TDSB currently can not mandate vaccination for staff or students. Legislation must first be passed by the Province of Ontario.

Neighborhoods	Total 18+ Population	Initiated Vaccination %		Completed Vaccination %		Recent Cases %
		18+ Age Group	All Age Groups	18+ Age Group	All Age Groups	
Bayview Village	19.9K	70.9%	64.7%	65.5%	59.4%	0.01%
Bayview Woods-Steeles	14.6K	70.8%	65.9%	66.1%	61.2%	0.02%
Don Valley Village	22.8K	72.8%	65.2%	66.5%	59.1%	0.04%
Henry Farm	18.5K	76.7%	66.4%	69.3%	57.8%	0.09%
Hillcrest Village	17.3K	68.7%	63.9%	63.7%	58.7%	0.02%
Pleasant View	16.4K	71.2%	64.9%	64.7%	58.3%	0.02%
Don Valley North Total	109.5K			66.0%		
Toronto Total		81.2%	72.1%	73.5%	64.7%	0.01%

*Toronto Public Health Data, Aug 7, 2021



Learning in Elementary Schools (JK – Gr 8)

Attendance



- In Person: Students to attend school every day
- Virtual: Students will be learning online every day

Time Table



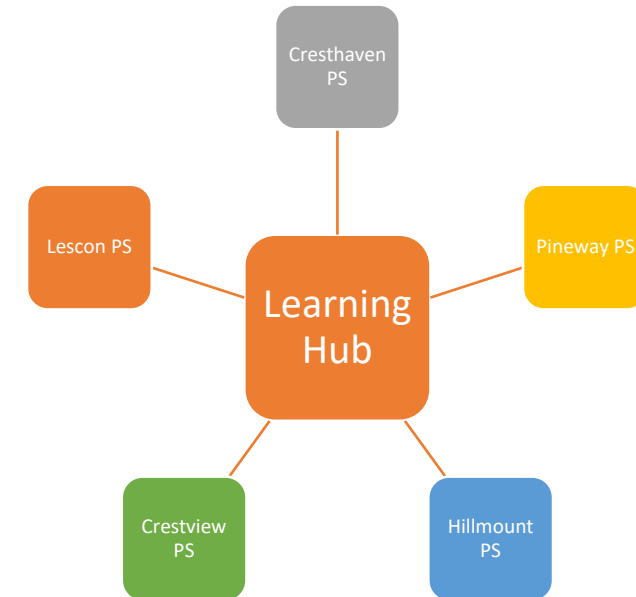
- In Person: Students will follow normal daily time table
- Virtual: Daily 180 min (JK/SK) to 225 min (Gr 1 – 8) of live synchronous learning combined with asynchronous works as required

Classroom Structure



- One teacher per class teaching all classes
- Core French teachers will rotate among classes (expectation only)
- Rotary timetable in middle schools will not be implemented
- Mixed grade classes are possible
- Students will be placed in class groups while indoors and larger groups for recesses outdoors.

Virtual Learning Hub



Example for illustration only

- Administrated by a local school
- Staffed by teacher from learning hub schools (possible LTO)
- Students from learning hub schools are assigned to mixed classes
- Students remain registered in home school

Learning in Secondary Schools (Gr 9 – 12)

Modified Semester

- Mandated by the government as one of two options (quadmester)
- Courses will be offered based on student enrollment

Modified Semester Benefits vs Quadmester

- Slows down progression (from 2 to 5 months) for better knowledge absorption
- Tests do not happen every few days
- Offers opportunity for students to complete longer projects
- Missed school days have lower negative impact

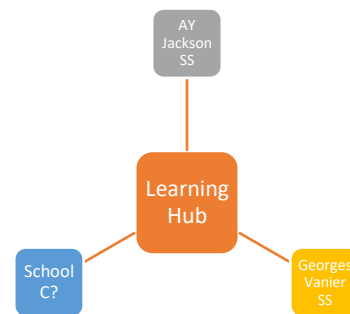
WEEK 1					
	Monday	Tuesday	Wednesday	Thursday	Friday
9:00 – 11:30 am (2hr.30min/150 min)	Course 1	Course 1	Course 1	Course 1	Course 1
11:30 – 12:15 pm	LUNCH				
12:15 - 2:45 pm (2hr.30min/150 min)	Course 2	Course 2	Course 2	Course 2	Course 2
WEEK 2					
Day	Monday	Tuesday	Wednesday	Thursday	Friday
9:00 – 11:30 am (2hr.30min/150 min)	Course 3	Course 3	Course 3	Course 3	Course 3
11:30 – 12:15 pm	LUNCH				
12:15 - 2:45 pm (2hr.30min/150 min)	Course 4	Course 4	Course 4	Course 4	Course 4

Attendance



- In Person: Students to attend school every day
Morning and afternoon classes are 150 min each
- Virtual: Students will be learning online every day
Morning and afternoon classes are 150 min each

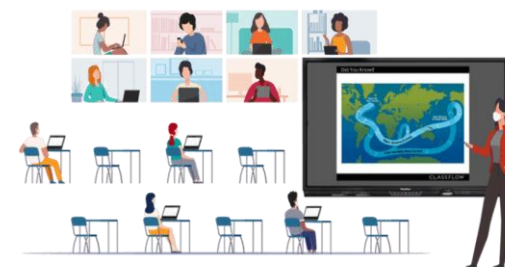
Learning Hub



Example for illustration only

- Operated by a local school
- Staffed by teacher from learning hub schools (possible LTO)
- Students remain registered in home school

Virtual/In-Person Hybrid



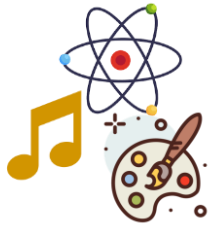
- May be implemented if situation allows (course structure, class size, teacher agreement)
- Operated by local school
- Staffed by teacher from home school

Speical Ed/Specialized Programs/French Language



Special Education

- All special education and ISP programs will be offered in in-person schools
- Virtual learning will be made available depending on the viability and attendance of the program.
- Students in Virtual ISP programs may be placed together with students from other schools/areas if required.



Specialized Education and Alternative Schools

- In-Person programs will continued to be offered based on program attendance and viability
- Virtual Programming will proceed only if there is sufficient enrollment
- Virtual Students may be combined from multiple similar programs based on their overall similarities (STEM, Arts, Leadership)

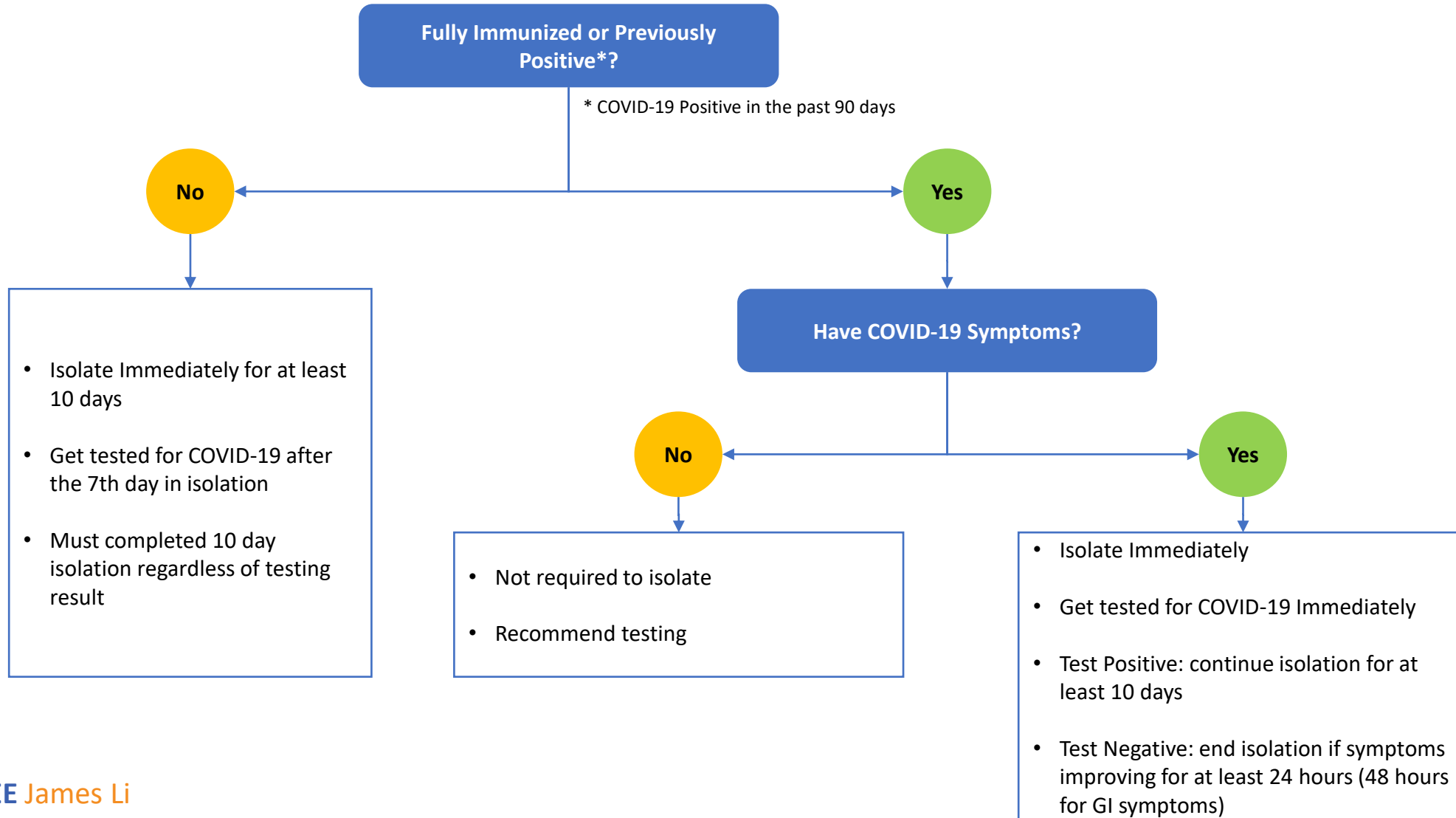


French Education

- Programming (French Immersion/Extended French) will proceed only if there is sufficient enrollment to offer the classes.

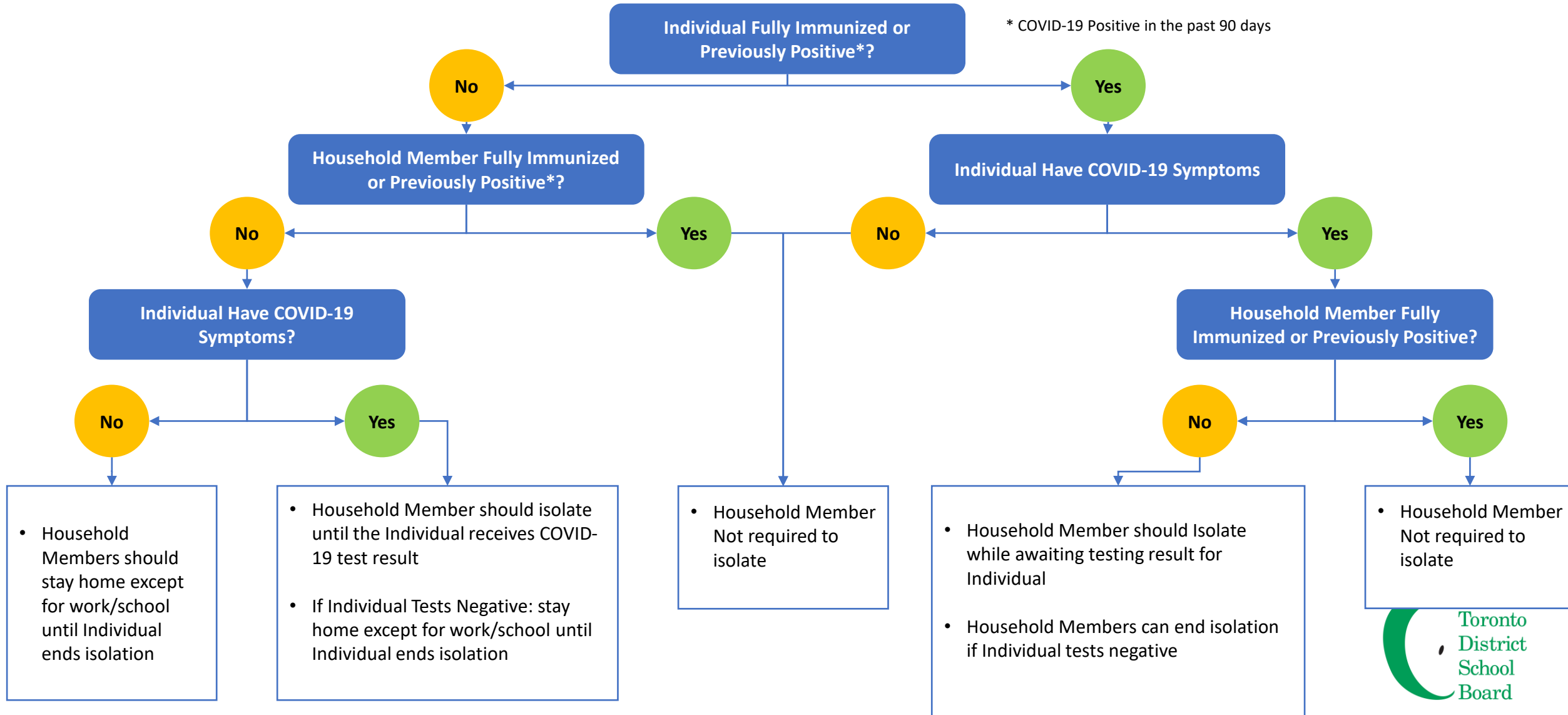
COVID-19 Case Management for Students/Staff

If an individual has been in contact with a an individual who has been tested positive for COVID-19



COVID-19 Case Management for Household Members

If an individual has been in contact with a an individual who has been tested positive for COVID-19



COVID-19 Outbreaks in Schools – Protection Measure

Definition of Outbreak: Two or more lab-confirmed COVID-19 cases within a 14 day period where at least once case could have been acquired inside the school

Dismissal Measures

- In-person dismissal for specific cohort to virtual learning
- In-person dismissal for entire school to virtual learning
- Dismissal of non-vaccinated individuals only

Ending an Outbreak

- 14 days with no evidence of ongoing transmission at the school

AND

- No further symptomatic individuals associated with the initial cohorts have been reported

Non-Dismissal Measures

- Display outbreak signage at entrance to affected areas
- Informing community on outbreak
- Restricting visitors to school
- Limiting student movement and discontinuing extra curriculars
- Restricting staff movement and where they can work
- Further Enhancing cleaning in outbreak areas
- Whole school testing

Questions?

